

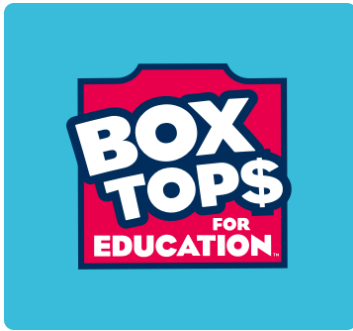
EARN CASH FOR SCHOOLS WITH BOX TOPS

TOGETHER, WE CAN MAKE A BIG DIFFERENCE

For over 25 years, Box Tops for Education has given families an easy way to earn for schools with products they already buy. Today, you can find thousands of participating products throughout the store — and all you need is the Box Tops app.

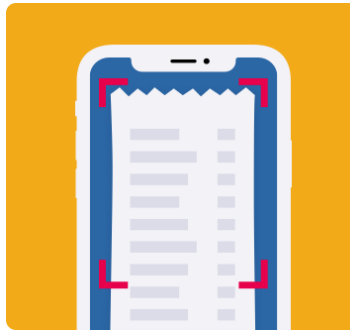


HERE'S HOW IT WORKS:



BUY BOX TOPS PRODUCTS

Earn for schools with the brands you love.



SCAN YOUR RECEIPT

Use the Box Tops app to submit your receipt within 14 days of purchase.



EARN CASH FOR SCHOOLS

Box Tops products are identified and earnings are credited online.



ONLINE SHOPPERS CAN EARN WITH BOX TOPS, TOO!

Whether you order groceries for delivery or pickup, shop through your store's app, or request an email receipt at checkout, you can earn for your school no matter where you shop.

SEE PRODUCTS & LEARN MORE ABOUT THE BOX TOPS APP AT [BTFE.COM](https://www.btfec.com)

DON'T HAVE THE BOX TOPS APP YET? DOWNLOAD IT NOW:





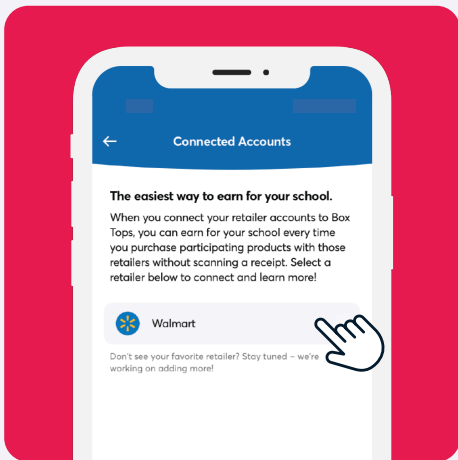
EARN FOR YOUR SCHOOL WITHOUT SCANNING!



Now you can earn cash for your school every time you buy Box Tops products at Walmart — no scanning required! Just follow these simple steps to connect your Box Tops and Walmart accounts.

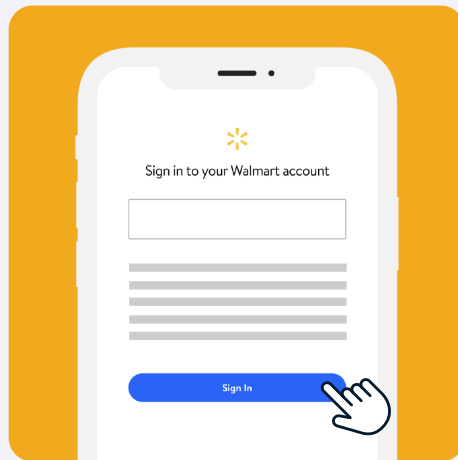
NEW FEATURE!

HOW IT WORKS:



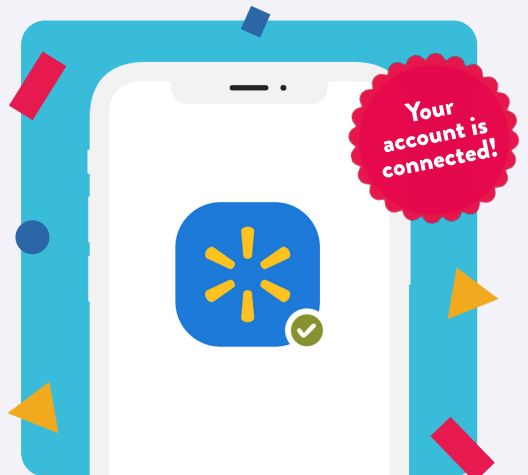
STEP 1

Download the Box Tops app or update to the latest version. In the app, go to your profile, then tap on “Connected Accounts” and select “Walmart.”



STEP 2

When prompted, sign in to your Walmart account, (If you don't have a Walmart account, you'll be prompted to create one). Make sure to save a payment method to your Walmart account.



STEP 3

Your Walmart account is now connected to Box Tops, so your qualifying purchases made in-store and online with a saved payment method will earn for your school! Box Tops will be credited after you receive your Walmart items.

DON'T HAVE THE BOX TOPS APP YET? GET IT AT [BTFE.COM/APP](https://www.btfecom/app)

CONNECT YOUR ACCOUNTS NOW FOR THE EASIEST WAY TO EARN

